

Bee Path
Cities



PHILOSOPHY



KEY PRINCIPLES of a Bee Path City



PARTICIPATORY APPROACHES ARE ESSENTIAL

Becoming a Bee Path City is all about fostering inclusive, multidimensional engagement of individuals, organisations and government entities to deliver more diverse and more sustainable actions.

Bee Path Cities can take inspiration from the URBACT method and consider forming a dedicated [URBACT local group](#).

Key local stakeholders include: beekeepers and their associations; schools; local business owners; health organisations; other local NGOs/associations; experts with specific knowledge and skills; as well as other interested individuals.

SUPPORTING COMMUNITY ACTION

Urban authorities should not only consult with local stakeholders, but help them to **establish a local group** and **empower them to take action**.

At the very least, urban authorities should **provide operational support** to local groups and ensure that they have adequate facilities for regular meetings.

Having a budget for specific actions can help. Even a small budget can add value in giving confidence and motivation to local stakeholders.

Ideally, the urban authorities will also **express political support** for the proposed actions, projects and ideas of the local groups.

A SUPPORTIVE LEGAL AND ADMINISTRATIVE FRAMEWORK

Urban authorities need to **create a supportive environment** for local action in favour of bees and other pollinators.

This starts with encouraging and nurturing a **cross-sectoral mindset** and involving various departments across the urban authority and transferring their knowledge and expertise into actions.

Creating a supportive framework can mean **integrating urban beekeeping** and broader consideration of all pollinators into **urban management and planning**.

It can also involve passing and implementing **specific legislation**, for example to encourage ecological practices and tackle pollution.

OUR VISION

Bee Path Cities is a **network** of urban authorities that have come together under the shared vision of creating cities that are **good for pollinators and therefore good for people**.

We believe that there is much to be gained from **exchange and learning between cities** keen to take steps along the Bee Path towards more environmentally sustainable and healthy urban areas for all living beings.

OUR AIMS

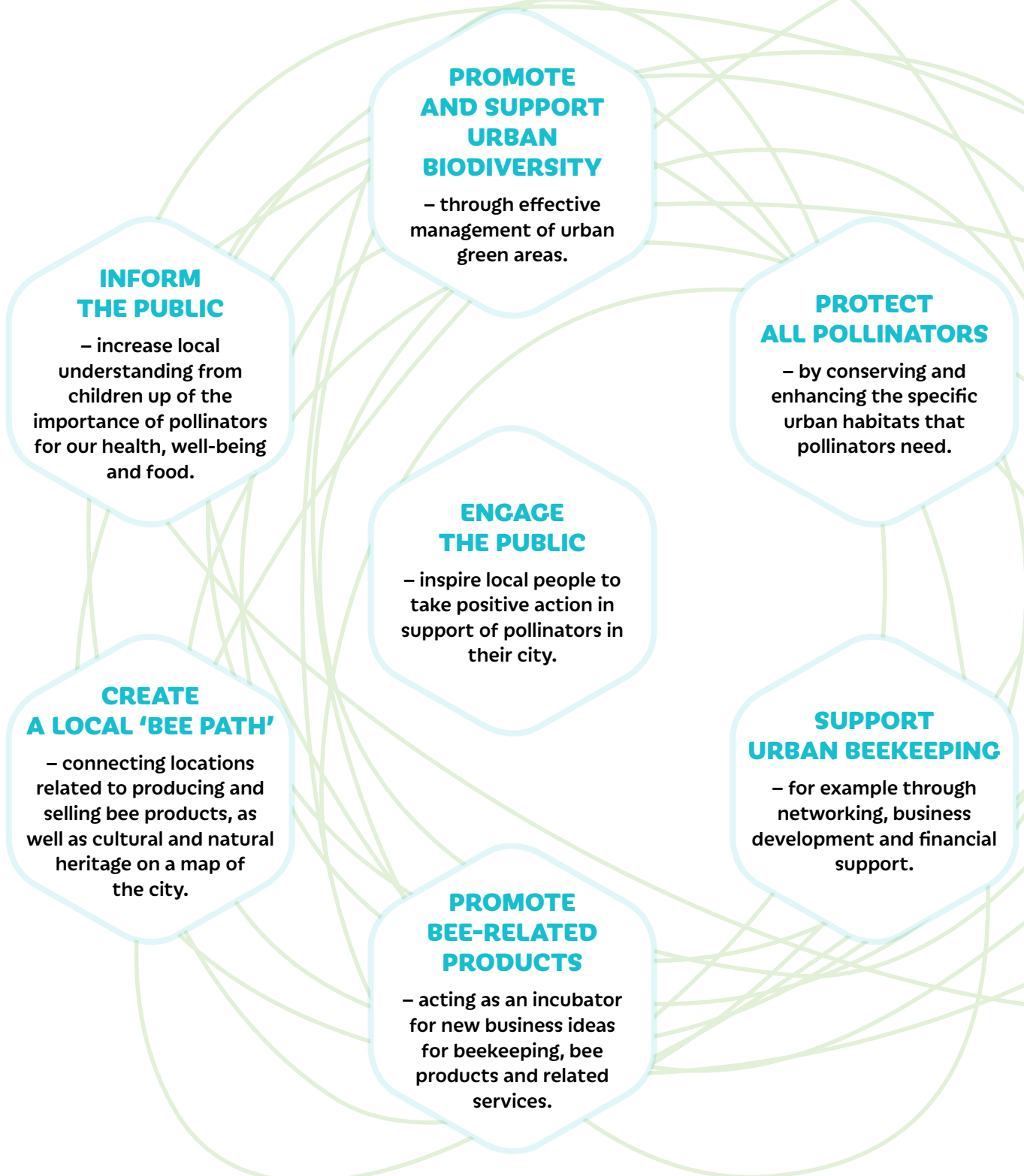
- **Knowledge transfer**
– sharing information, ideas and initiatives for enhancing urban sustainability.
- **Joint action**
– finding opportunities to fund common activities (in the form of local actions, information sharing, awareness-raising) and strengthening our movement around the world.
- **Awareness raising**
– increasing public understanding of the connections between pollinator well-being and broader urban sustainability.

OUR ACTIONS

- **Regular online coffee/tea mornings**
– to share information, ideas and practices.
- **Annual meetings**
– to review partners' accomplishments, discuss challenges, exchange knowledge and good practices, as well as to plan joint activities.
- **Biannual thematic conference**
– to discuss specifics of urban beekeeping and learn about new approaches and good practices.
- **Training for new partners**
– biannual basic training for new cities on key modules of sustainable urban beekeeping.
- **Bee Path Cities events**
– especially the May 20th World Bee Day and other events, aiming to reach out to citizens, NGOs, companies, institutions and involve them in this mission.
- **Promotion**
of network principles and cities' innovative approaches at different events and on social media. All information will be published on network webpage.

LOCAL ACTIONS of Bee Path Cities

A range of local actions can be taken by urban stakeholders in support of our shared vision. Cities do not have to do all of these – the important thing is to start somewhere and seek continual improvement!



BECOME a Bee Path City!



OUR HISTORY

The Bee Path Cities network emerged from two networks (BeePathNet and BeePathNet-Reloaded) supported by the European cooperation programme 'URBACT'. These ran from 2018 to 2021 and from 2021 to 2022 engaging a total of nine EU cities in seeking to understand, adapt and re-use the inspiring 'Bee Path' practice of Ljubljana (Slovenia).

The independent Bee Path Cities network was launched in October 2022 to continue the exchange and learning opportunities for cities beyond URBACT support. It is now open to all urban authorities in Europe and across the world.

OUR MEMBERS

The founder of this network is Ljubljana (Slovenia).

Cities that so-far transferred Ljubljana's good practice are: Amarante (Portugal), Bansko (Bulgaria), Bergamo & Cesena (both Italy), Bydgoszcz & Sosnowiec (both Poland), Hegyvidek (Budapest, Hungary), Nea Propontida (Greece) and Osijek (Croatia).

The latest list and map of Bee Path Cities is available on our web page: www.urbact.eu/bees

Does your city support the philosophy set out in this document? Join us today!

WHY JOIN

- Become a part of a supportive network of cities.
- Learn more about the benefits of pollinators for urban sustainability.
- Share your cities' experiences with others.
- Benefit from the knowledge and experience of our members.
- Create your own Bee Path or build on the original good practice example from Ljubljana.
- Take inspiration from specific activities in support of pollinators.

Becoming a Bee Path City entails no financial or formal obligations. It is based purely on a common desire to share and learn from other cities in Europe and across the world.

HOW TO JOIN

Interested to know more? Why not join our next regular online coffee morning?

Want to confirm your commitment? Fill out the online application form to become a formal member.

Contact us for more information on how your city can get involved and start your Bee Path journey.

E: beepathnet@ljubljana.si

W: www.urbact.eu/bees





EUROPEAN UNION
European Regional Development Fund



Mestna občina
Ljubljana



Grad Osijek



Sosnowiec



Comune di Cesena

